



## How to update your SC NAUTEK drivers on Windows Vista?



SC 100



SC 200

### Table des matières

1/Introduction :.....	2
2/Télécharger les drivers compatibles.....	2
3/Branchez votre SC via USB à votre PC .....	2
4/Rendez vous sous : .....	2
5/Choisissez l'affichage classique.....	2
6/Double cliquez sur l'icône Système.....	3
7/Cliquez sur gestionnaire de périphériques.....	3
8/Cliquez sur continuer .....	3
9/Sélectionner votre SC .....	3
10/Cliquez droit sur votre USB Serial Port (COMx).....	4
11/Cliquez sur 'Mettre à jour le pilote logiciel' .....	4
12/Rechercher un pilote logiciel sur votre ordinateur .....	5
13/Dans cette fenêtre cliquez sur Parcourir.....	6
14/L'installation des nouveau drivers pour votre SC est en cours.....	7
15/L'installation est finie, cliquez sur Fermer.....	7
16/Vérifiez que la bonne version de drivers est installée:.....	8
Félicitations vos nouveau drivers sont bien installés.....	9



**NAUTEK**  
**TACTICAL ELECTRONICS**

## **1/Introduction :**

Our existing USB products are all based on USB communication chips. Vista has USB drivers preinstalled: unfortunately, the default settings for those drivers are not fully compatible with our products. Under Vista, however, the default operating system behavior upon seeing a USB device that it thinks it recognizes is to automatically use its internal default drivers, without giving the user a chance to override the settings. This means that communications with our existing boards may always be adequately reliable.

Our devices which are set up for Vista now have a different USB feature associated with them, which the default Vista drivers will not full recognize.

We advise you consequently to manually upgrade your drivers for your SC device and to follow this faq.

## **2/Download the latest drivers for your SC**

Which are full compliant with XP and Vista from our web site on the [Downloads](#) page

or directly on the following link: [NTKDriversV11.zip](#)

Save this file on your desktop and extract all.

## **3/Plug your SC to you PC via USB**

And switch your SC device on.

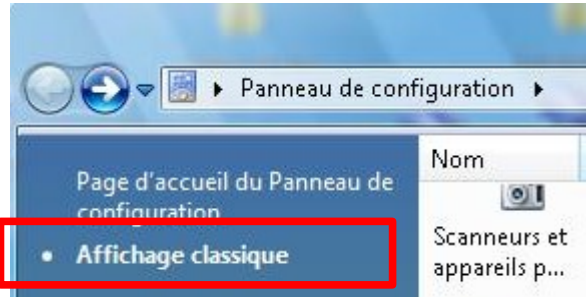
## **4/GO to Start:**

click **Control Panel**, click **Performance and Maintenance**



# NAUTEK TACTICAL ELECTRONICS

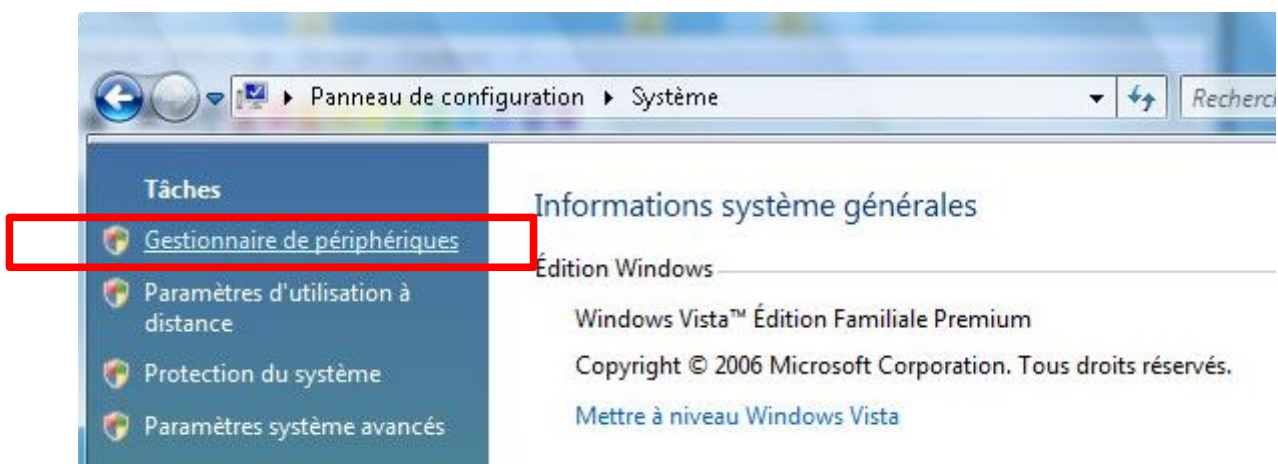
**5/Chose the standard display.**



**6/Double click on System.**



**7/On the System tab, click Device Manager**



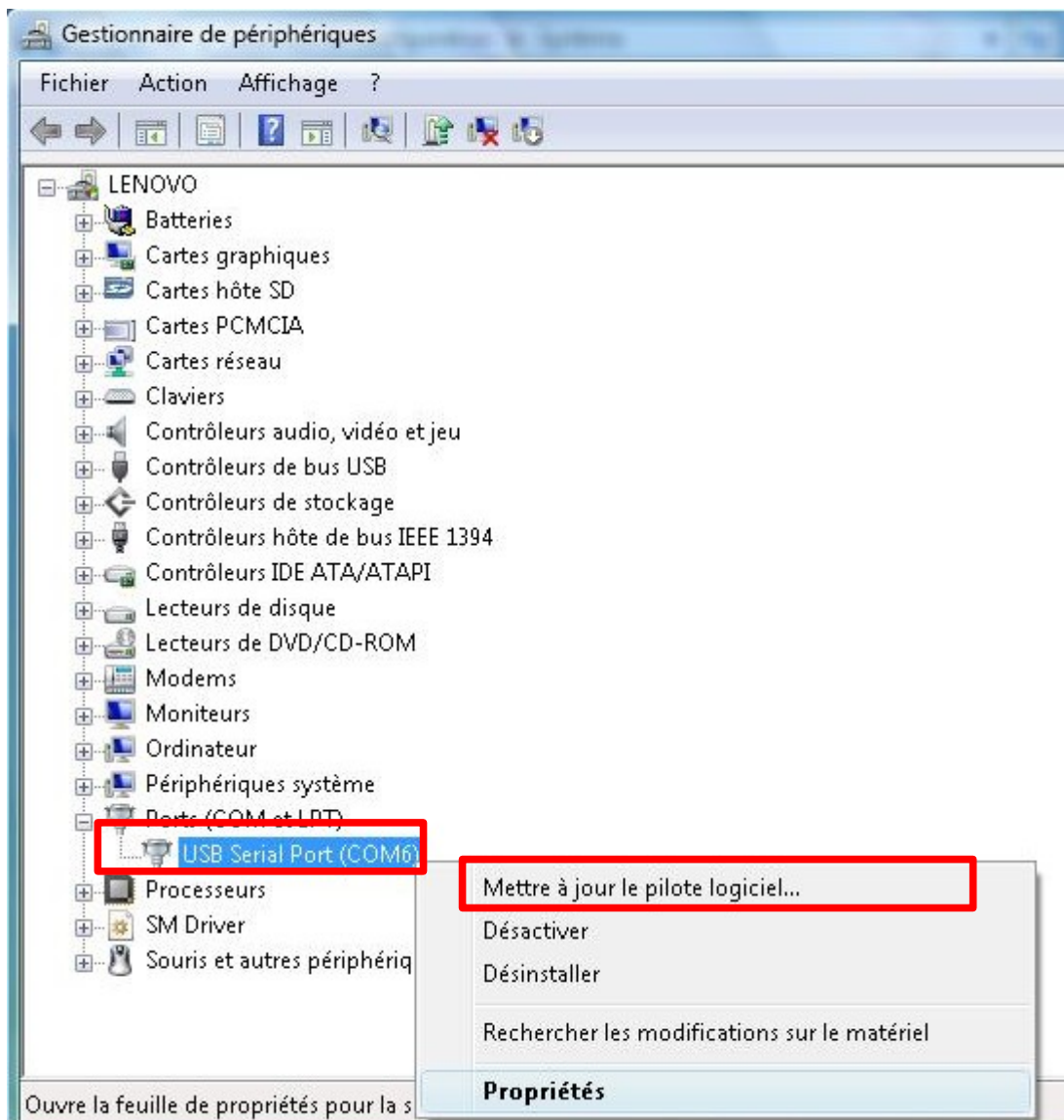


## 8/Click on next

On the automatic displayed window.

## 9/Select your SC device in the list

Double click on Ports(COM and LPT)



Your SC device appears as a USB Serial Port (COMx).



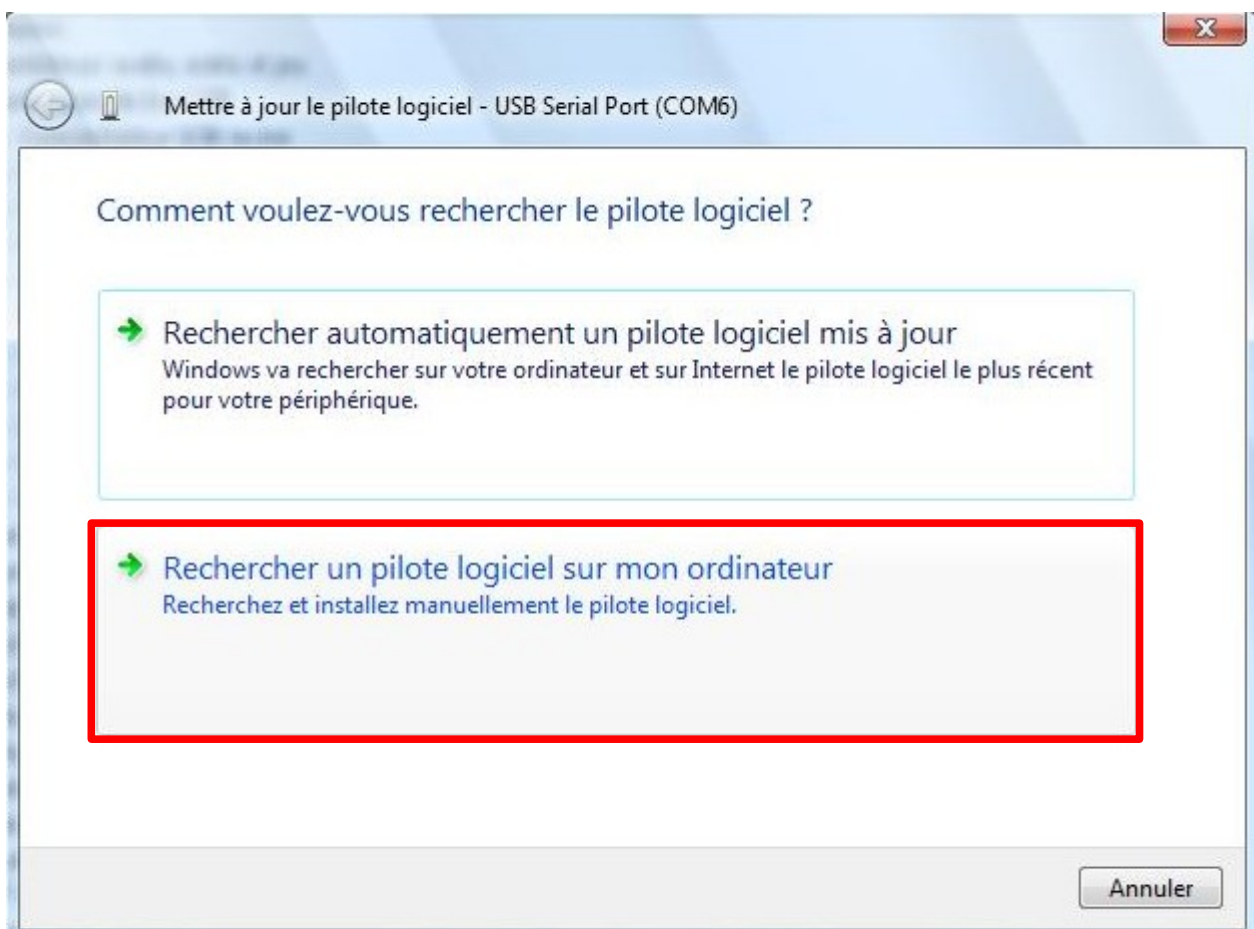
# NAUTEK TACTICAL ELECTRONICS

**10/Click right on your USB Serial Port (COMx)**

**11/Click on 'Update driver'**

**12/Look manually for the latest generation driver on your computer.**

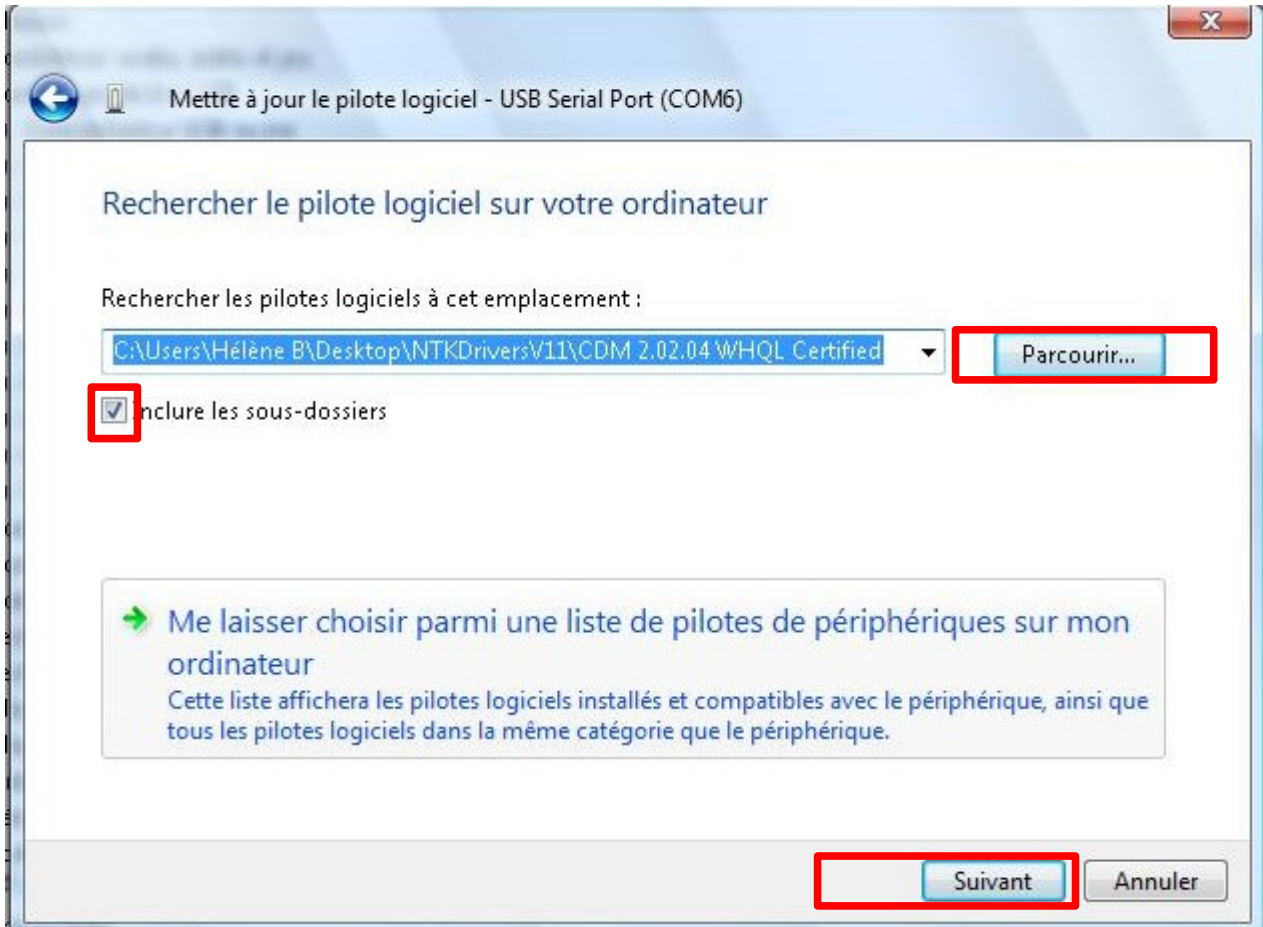
**Don't let VISTA look automatically for an updated driver, it will not work.**





## 13/In this window, click on Browse

And select the file you just extract from your download. Click on Next (please include all folder in your search)





**NAUTEK**  
**TACTICAL ELECTRONICS**

**14/The SC drivers upgrade in is progress.**



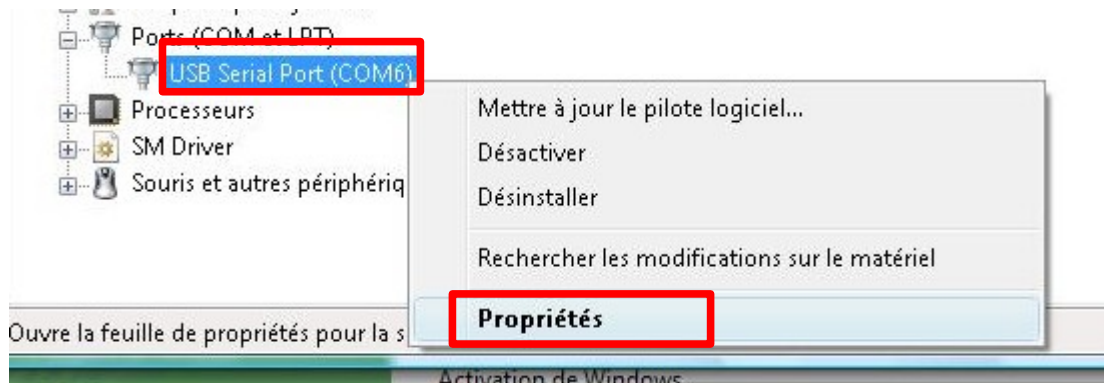
**15/When the wizard has finished installing the drivers, click on Finish**





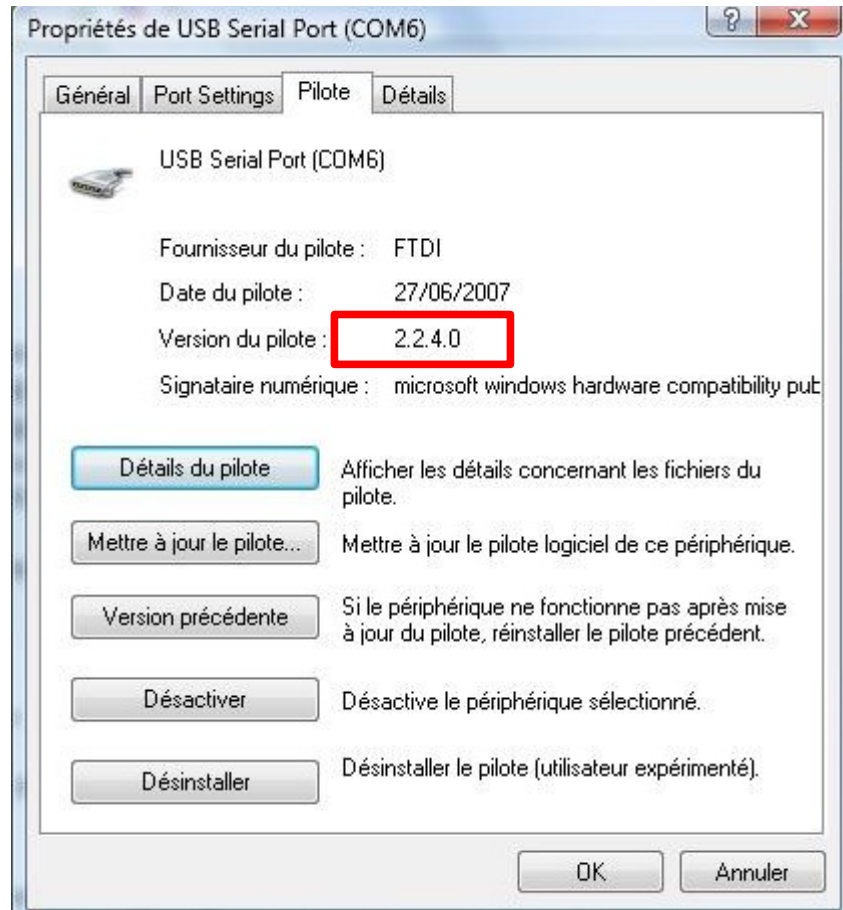
## 16/Verify the drivers version installed on your PC:

In device manager, click right on your USB Serial Port



Then click on properties and go to Drivers

Once the upgrade correctly done, the driver version should be 2.2.4.0







**NAUTEEK**  
**TACTICAL ELECTRONICS**

***Congratulations : your drivers are correctly installed and your SC is ready to work properly with your Nauteek softwares.***